



# HOUSING

**B - Series = Single Storey**  
BT = Twin Storey



*Make Your dreams come True*



## ETAP HOUSING

### INDEX

page

1	front page
2	index
3	ETAP intro
4	company overview
5	building details
6	our mission
7	building advantages
8	unwelded structure
9	fiber cement details
10	software
11	start
12	BT132      Two storey Villa 132m2
13	B 147 <b>Single storey Villa 147 m2</b>
14	B 129
15	B 113
16	B109+14
17	B 111+11
18	B 113+8
19	B 104+13
20	B 108+5
21	B 108+2
22	B 94+4
23	B 89+7
24	B 83+10
25	B 86
26	B 70+14
27	B 79+3
28	B 70+11
29	B 70+8
30	B 69+8
31	B 75
32	B 68+4
33	B 73
34	B 61+7
35	B 55+7
36	B 47+6
37	B 42+7
38	B 49
39	B 40+5
40	B 35+5

### B - Series

B = single storey

BT = Twin storey

# ETAP HOUSING

**PREFABRICATED BUILDINGS**

**\* The Ultimate Sign for Quality**

**\* Since 1970 , we are in building and construction.**

- \* The New developed Houses respect the actual environment demand from 2020, and fullfill all EEuropean norming concerning insulation,
- \* zero environment and power demand
- \* zero energy loss



*We developed more than 50 single and double standard villas and houses, who give you an economic advantage , far away from our competitors . ( from 28 - 159 m2 living space)  
EtapHousing means: LifeLong Quality , Green Investment, Your best choice for living.*

EtapHousing - a Mic Company , Be - 9980 St Laureins Belgium

Be : Tel +32 9 348 48 48 Fax: +32 9 348 95 16 Email : housing@etapyachting.com

NI - Axel :+31,115,788 118 PI - Kolo : +48,918,871 044 Lu : +35,22,7860 237 In -Cherthala/Kerala 91,478 2812528



Since 1970 , a sign for quality in Sailing and Building Construction,

You find our respected customers anywhere in the world ,  
or Worldwide Sailing , or Living the Etap-Way .

**EtapYachting.com**



**The worlds only Unsinkable and High Quality Sailing Yachts**

A full range from 21 up to 48 foot Sailing Yachts  
( 7 - 15 m)

**Etap - Gtc Containers**

EASY TRANSPORTATION AND  
INSTALLATION

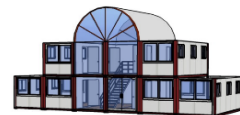


Dubai construction area  
From Flat-Pack to full-unlimited container constructions



**Office and Housing Containers**

- \* 2,4x6
- \* 3x6
- \* All Possible connected constructions



Complete unlimited Offices and  
Container Housing

**Etap - Gtc Tents and Storage**

Constructions and Tents for : \* Storage \* Production \* Tennis \* Swimming Pools  
\* Maneges(Horse) \* Garages \* Parties \* etc .....



- \* 6 - 40 m free span width
- \* 2,5 - 6 m side height
- \* Unlimited length
- \* Siimple pvc versions up to fully insulated



**Etap Housing**

The new way for Housing and Building Constructions



Single and Double Storey Housing in unlimited  
variants;

Life Time Construction  
Fast ,easy and economic construction  
Insulation and aesthetic unmatched



Etap -Yachting , -Housing , -Gtc , are registered trademarks from Mic  
facilities in Belgium - Netherlands - Germany - Poland - India - China



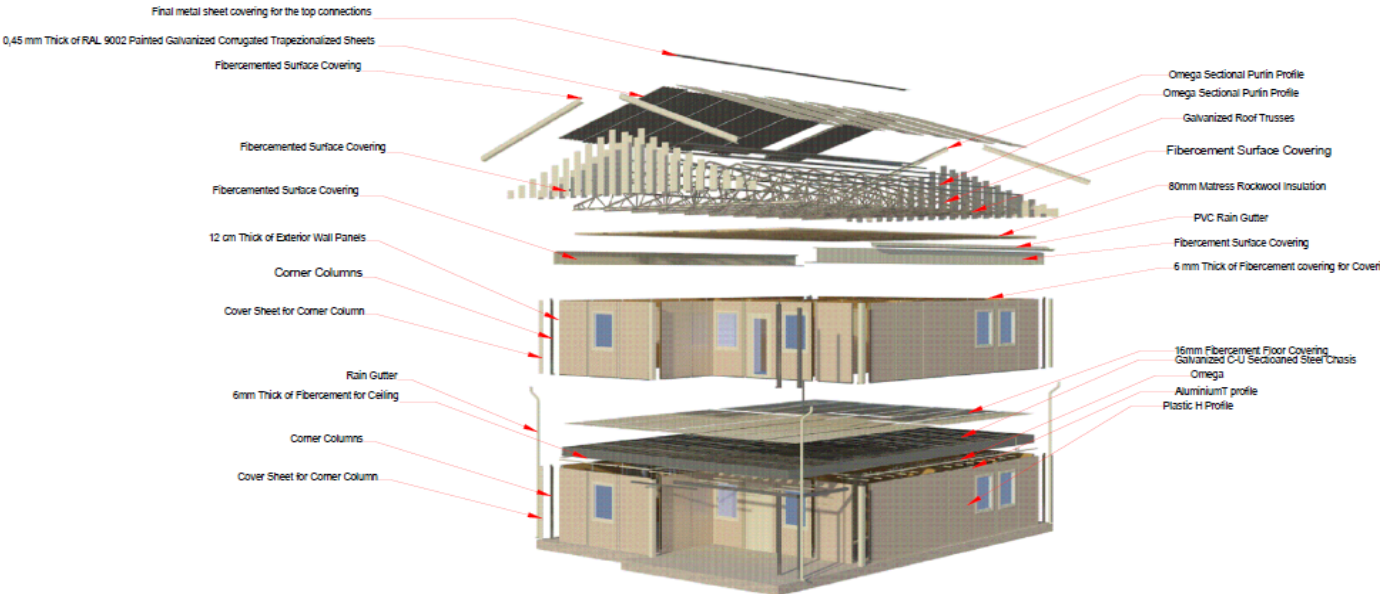
**Technically very advanced Life-Time Construction**

*Fibre Cement Boards, Etex type , available in many patterns*

*Fully Galvanised base steel construction for fast and lifetime durance.*

*A wide range of standard houses, to make Your choice more easy.*

**DOUBLE STOREY BUILDING DETAILS**



**Advanced Technology for your comfort**





# Vision

# Mission

# Aims

# Quality Policy

# Services

**Vision**  
To change the construction culture ( construction system ) .

**Mission**  
Meet all people' housing requirements by creating reliable, aesthetic, economical, ready and habitable places, offer a life.

**Aims**  
To meet all the customers with our products in maximum level to increase the number of ready-construction showrooms at inboard and abroad for raising the portion of our company in the market, developing new products by using the lastversion and high technology in prefabricated construction sector, supplying high qualified products with our best and fast services to ensure customer pleasure.

**Quality Policy**  
'Prolonged development' and 'customer focused' are our company principles within its aims and strategical policy line.

**Services**  
• Planning and design, • Building and container manufacturing facility, • Loading, • Logistic • Assembly, • Electrical and sanitary installation process inside the building, • Painting facility, • De-mounting and mounting facility, • Post - sale services.

**Our Advantages,**

*The Advantages of EtapHousing - Villas and Houses*

*Super High Etap Quality - Insulation - Estetique - Life Time - Economic*



All our products are manufactured by using unwelded structure technology.



Prefabricated buildings can be assembled and disassembled many times.



Facade covering material of our products is fibercement.



Prefabricated buildings can be manufactured in required dimensions and design as two or three storeys also.



Our products are designed as a result of architectural and statical calculations



Prefabricated buildings can be delivered as electrical, sanitary installation, paint and glazing included or if required without them.



The biggest advantage of buildings is being earthquake resistant and lightweight due to steel construction.



Transportation can be by means of trucks, ship, train or cargo aircrafts.



Pregabricated buildings are manufactured in a very short time and enable to fast assembly.



All materials used have ISO 9001. Raw materials are in the norm of TSE and EN.

**For Your security and help ,**

**Find out Your advantage**



**A world in transformation ,**



## Unwelded structure technology

*Your Villa of Dreams, all ready in minimum of time , in most cases 1 week  
ask for detailed information , and look our quality*

Our ready constructed buildings that have 60-300 mm wall thickness are designed by taking the climatic data into consideration. Being resistant to earthquake, fast manufacturing, easy assembling, economy and being preferable by customers.



**A Mix for world best materials,**

**Galvanised Steel**

**Fiber Cement Boards**





# Fiber Cement, Extremely Strong and Nature Friendly



## Fibercement

Fibercement, a product of Etex Hoboken (Be) , is one of the strongest materials ,

### Main advantages:


- \* No waterabsorbbsion
- \* Class A anti burning
- \* Time resistant
- \* a green product
- \* anti noise qualities
- \* easy handling
- \* available in many patterns

## Fibercement (Natural Cement Board) technology

The idea of finding solutions for exterior and interior surface coverings of buildings has encouraged mankind to develop different products. Production of asbestos based boards used widely before 1990, was terminated since asbestos was prohibited. Producers searched alternative products. 2 main product groups arised as a result of the attempt one of which is synthetic fiber based cement boards and the other one is fibercement boards. Fibercement products consisting of natural cellulose fiber, cement and ground silica instead of synthetic fiber that has not been determined yet by scientists whether has detrimental effects on people even if it is asbestos free, are preferred especially because of usage as exterior and interior plain facade covering. Synthetic based fiber products are used mainly for pressed roof materials.




## Ask our separate Catalogue , with all different Patterns



**Wood Pattern Board**  
Wood Pattern Fiber Cement Boards

These ultra thin patterned boards are designed to look and behave like natural wood. They are easy to carry and apply, they are lighter compared to other stone materials. They can be produced in the color measurements as general use or applied to stone covered in their required dimensions and they can be patterned with all kinds of wood grain patterns.

Surface appearance	Wood Pattern
Board Dimensions	1200x2400 mm, 1200x3000 mm
Thickness	8 - 12 - 14 mm
Incombustibility Class	A1



**Natural Stone Pattern Board**  
Natural Stone Pattern Fiber Cement Boards

These ultra thin patterned boards are designed to look and behave like natural stone. They are easy to carry and apply, they are lighter compared to other stone materials. They can be produced in the color measurements as general use or applied to stone covered in their required dimensions and they can be patterned with all kinds of stone grain patterns.


Surface appearance	Natural Stone Pattern - Stone
Board Dimensions	1200x2400 mm, 1200x3000 mm
Thickness	10 - 14 mm
Incombustibility Class	A1



**Brick Pattern Board**  
Brick Pattern Fiber Cement Boards

These ultra thin patterned boards are designed to look and behave like natural brick. They are easy to carry and apply, they are lighter compared to other stone materials. They can be produced in the color measurements as general use or applied to stone covered in their required dimensions and they can be patterned with all kinds of brick grain patterns.

Surface Appearance	Brick Pattern
Board Dimensions	1200x2400 mm, 1200x3000 mm
Thickness	10 - 14 mm
Incombustibility Class	A1



**Stone Masonry Patterned Board**  
Stone Masonry Patterned Fiber Cement Boards

These ultra thin patterned boards are designed to look and behave like natural stone masonry. They are easy to carry and apply, they are lighter compared to other stone materials. They can be produced in the color measurements as general use or applied to stone covered in their required dimensions and they can be patterned with all kinds of stone masonry grain patterns.


Surface appearance	Stone Masonry Pattern
Board Dimensions	1200x2400 mm, 1200x3000 mm
Thickness	10 - 14 mm
Incombustibility Class	A1



**Patchwork Stone Pattern Board**  
Patchwork Stone Pattern Fiber Cement Boards

These ultra thin patterned boards are designed to look and behave like natural stone patchwork. They are easy to carry and apply, they are lighter compared to other stone materials. They can be produced in the color measurements as general use or applied to stone covered in their required dimensions and they can be patterned with all kinds of stone patchwork grain patterns.

Surface appearance	Patchwork Stone Pattern
Board Dimensions	1200x2400 mm, 1200x3000 mm
Thickness	10 - 14 mm
Incombustibility Class	A1



**Block Stone Pattern Board**  
Block Stone Pattern Fiber Cement Boards

These ultra thin patterned boards are designed to look and behave like natural stone block. They are easy to carry and apply, they are lighter compared to other stone materials. They can be produced in the color measurements as general use or applied to stone covered in their required dimensions and they can be patterned with all kinds of stone block grain patterns.

Surface appearance	Block Stone Pattern
Board Dimensions	600x1800 - 600x2400 mm, 900x1800 - 600x3000 mm
Thickness	12 mm
Incombustibility Class	A1

### Technical Specifications

Standard Dimensions	Plain and Patterned: 1200 x 2400 mm, 1200 x 3000 mm
Thickness	Plain: 8 - 12 mm / Patterned: 8 - 14 mm
Length / Width Tolerance	A ± 5 mm / A ± 5 mm
Thickness Tolerance in Board thickness	Plain: ± 0.10 mm / Patterned: ± 0.15 mm
Board Edge Deviation	± 0.2 mm
Measurements of the Tiles	A x B ± 0.2 x (A - side length)
Surface Appearance	Plain or patterned
Density	< 2000 kg/m³
Vapor Diffusion Resistance Factor	μ = 150
Porosity	< 5%
Water Absorbance (Water)	< 0.4% (normal) / < 0.8% (normal) / < 0.8% (normal)
Frost Resistance	Proven Resistance to abrasion with TS EN 12467
Water Impregnability	Impervious to water in accordance with TS EN 12467
Resistance to Chloride Penetration	Impervious to chloride in accordance with TS EN 12467
Adhesive Contact	Does not contain asbestos (A1 type plate)
Emission of Other Potentially Substances	No emission of hazardous substances or gases
Coefficient of Thermal Expansion	0.8 - 0.900 mm/m
Coefficient of Heat Transmission	λ = 0.20 W/mK
Modulus of Elasticity	8000 N/mm² (longitudinal), 4000 N/mm² (transverse)
Water Absorption Rate	< 0.5%
Flexibility Rate of Boards in Mass	< 0.01% (relative to absorbance boundary)
Water Effect	0.5 mm (10 min. water action)
Sliding Factor (According to Thickness)	0 mm - 8 mm, 10 mm, 12 mm, 14 mm, 16 mm, 20 mm



# Our Software for your Comfort and Economy

## Architectural design and software technology

Our company uses X-steel, ArchiCAD, StruCAD, AutoCAD, Sap 2000 (v 14) and Revit in order to manufacture high Standart, technological, everlasting and aesthetic products especially these days when software programs are used in many sectors.

Different processes as conceptual and architectural design, presentation, engineering calculations, sections, 3D modelling, photorealistic pictures, animations, nodal point calculations, listing of materials used to manufacture a building, covering project drawings into numeric datas that computer based production line (CLP) needed, are implemented using high technology.

Xsteel® | GRAPHISOFT ARCHICAD | StruCad® | AutoCAD® | Sap2000® | Revit | CFS | Sta4Cad



Find out in the next pages, what is possible ,



# Houses of your DREAMS





For Your reference , pls ask our twin stage villa range if wanted.

### ETAP BT-132



We design following Your wish ,





B147+19



166m<sup>2</sup>



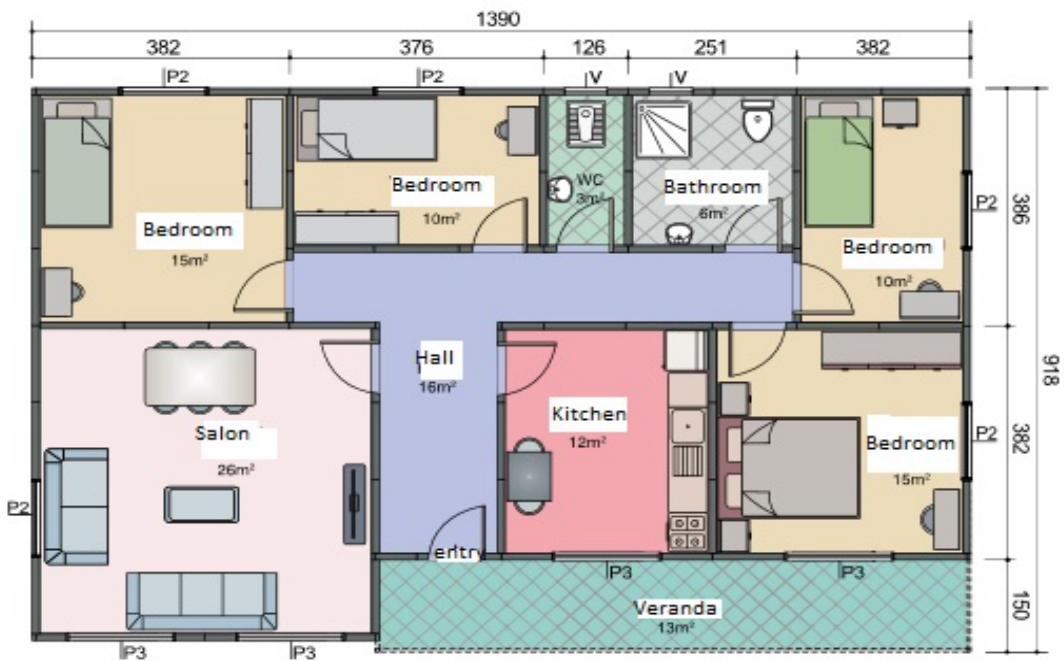




B113+13



126m<sup>2</sup>



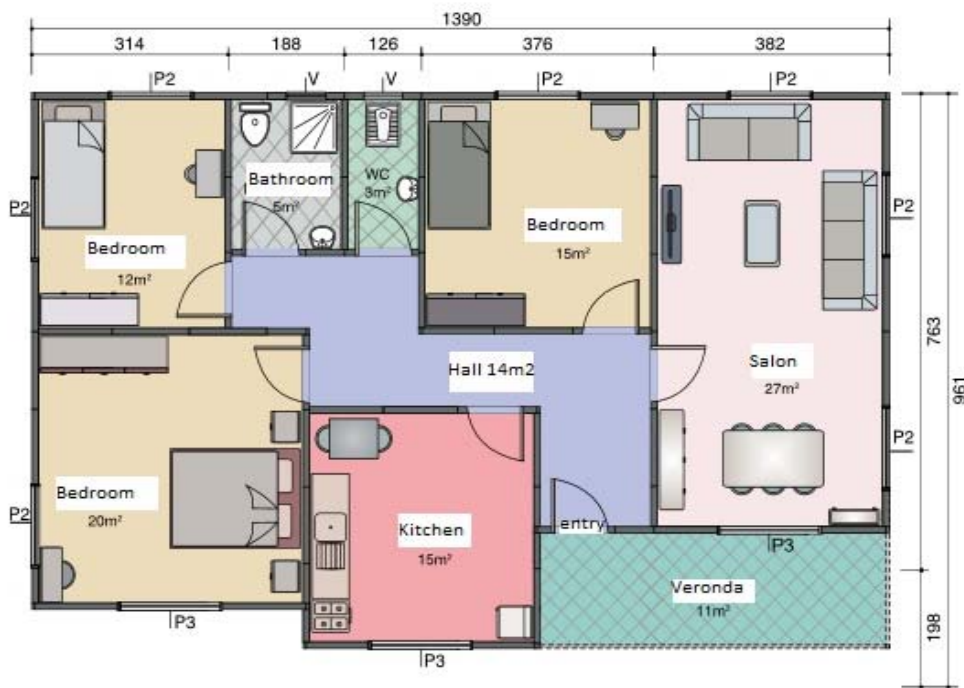




B111+11



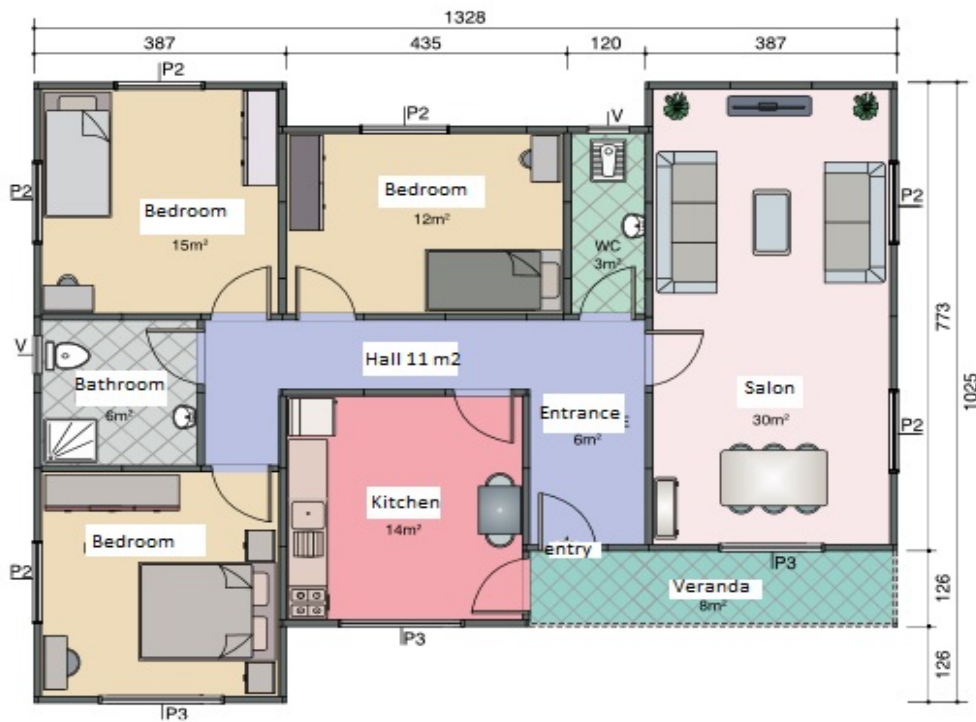
122m<sup>2</sup>



B113+8



121m<sup>2</sup>

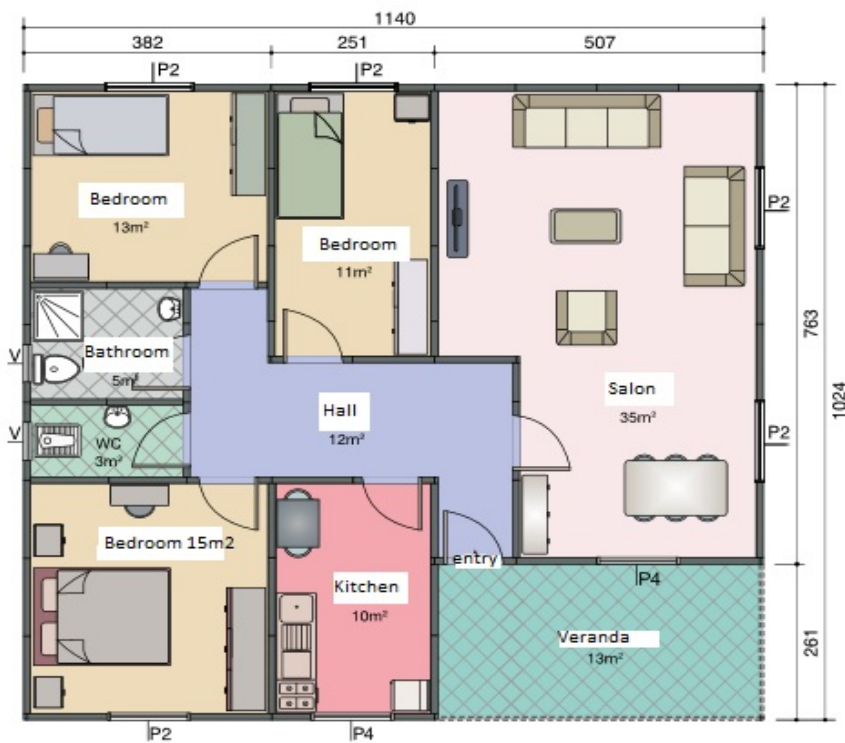




B104+13



117m<sup>2</sup>



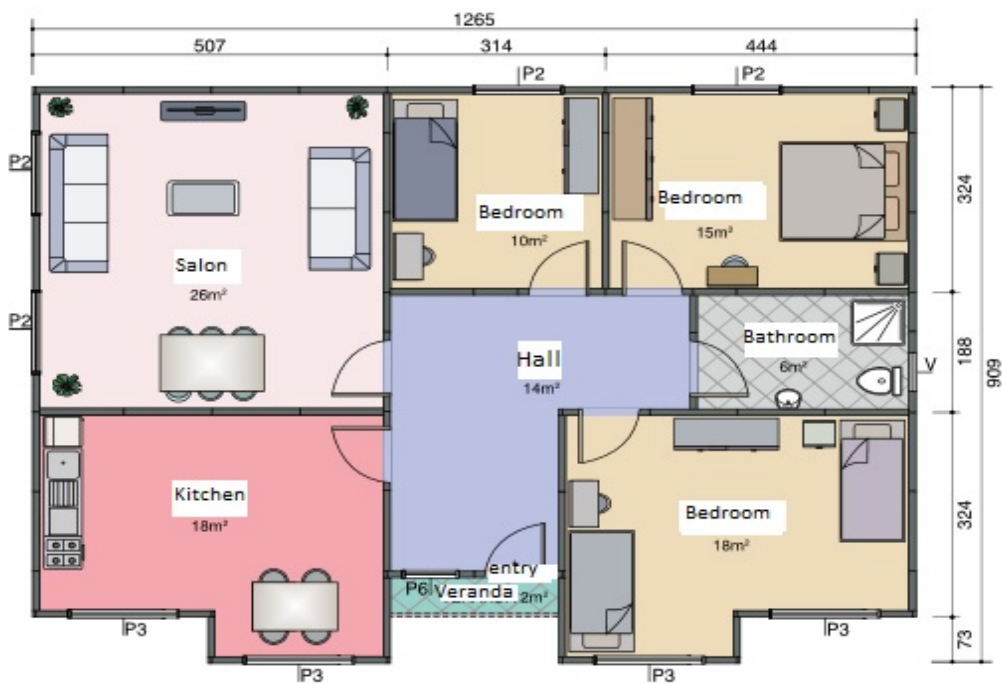




B108+2



110m<sup>2</sup>



ETAP B94+4



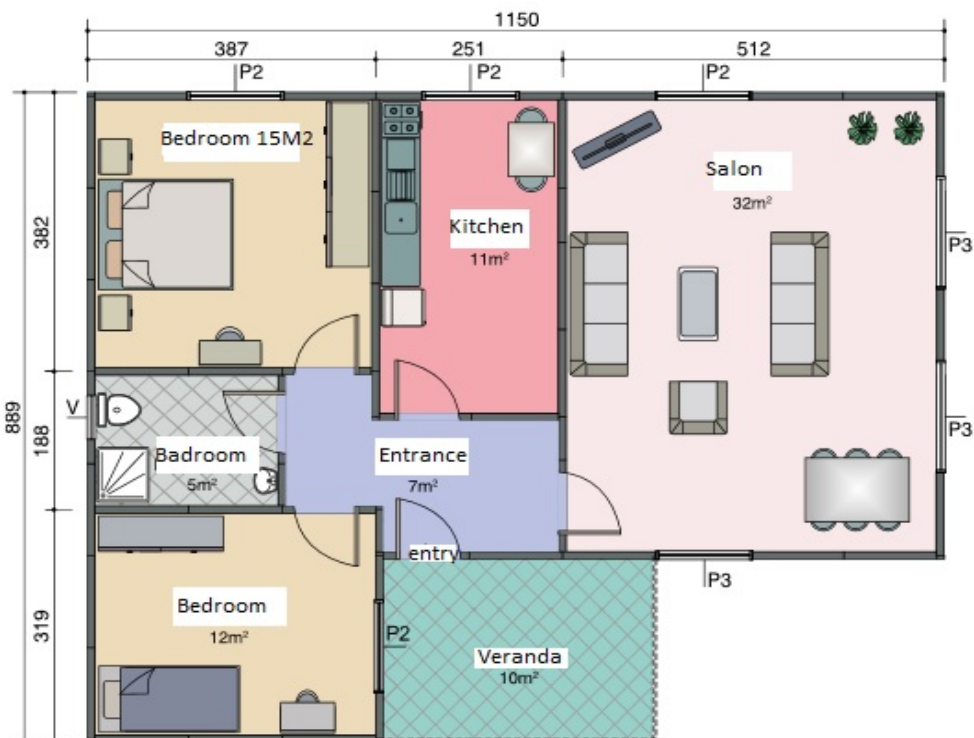
B89+7



96m<sup>2</sup>





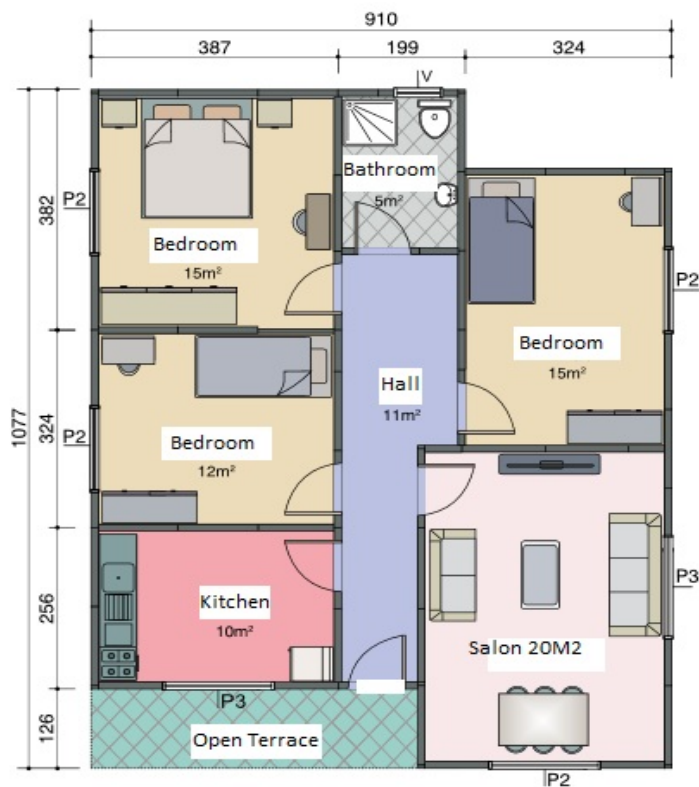


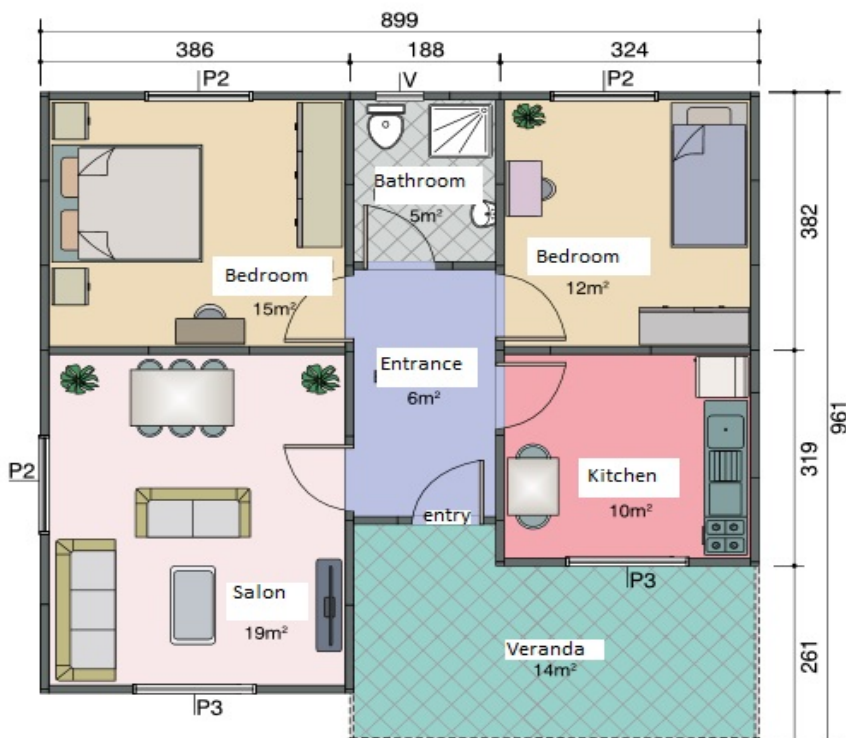


B86-1



86m<sup>2</sup>



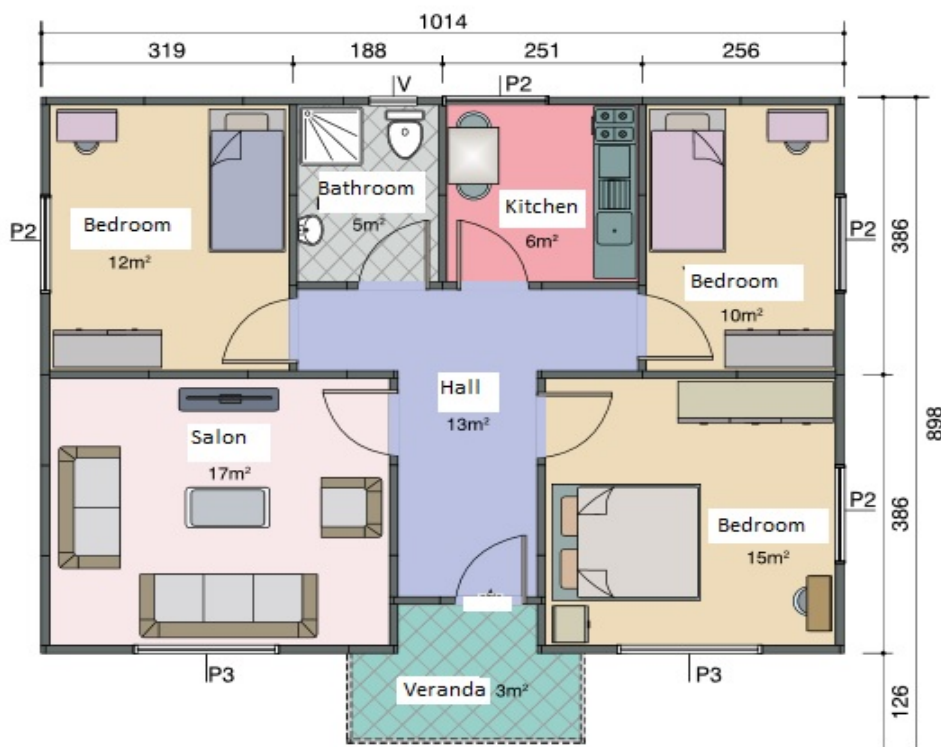




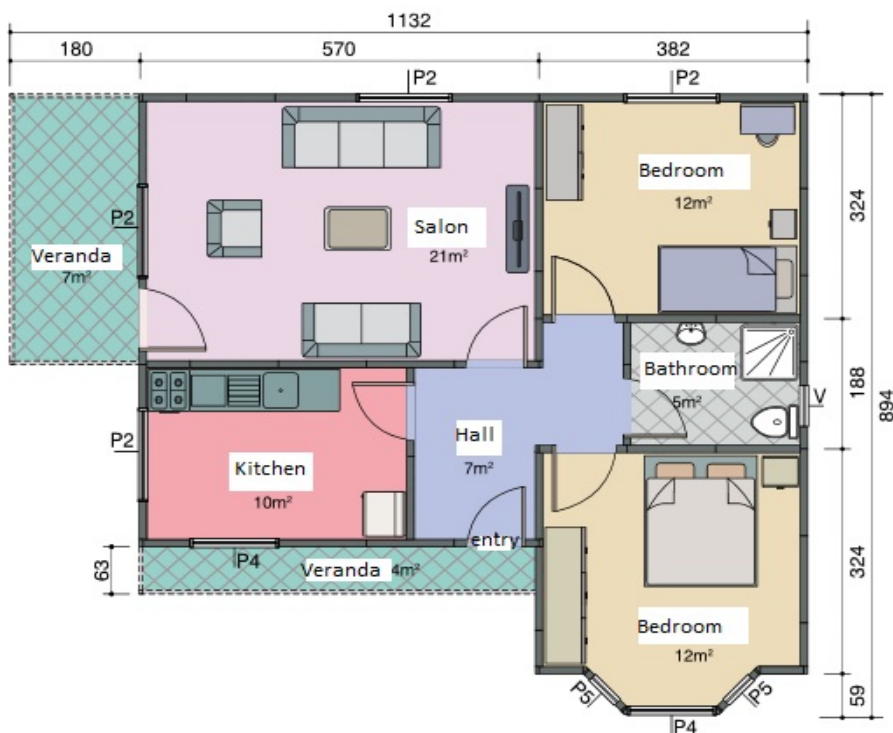
B79+3

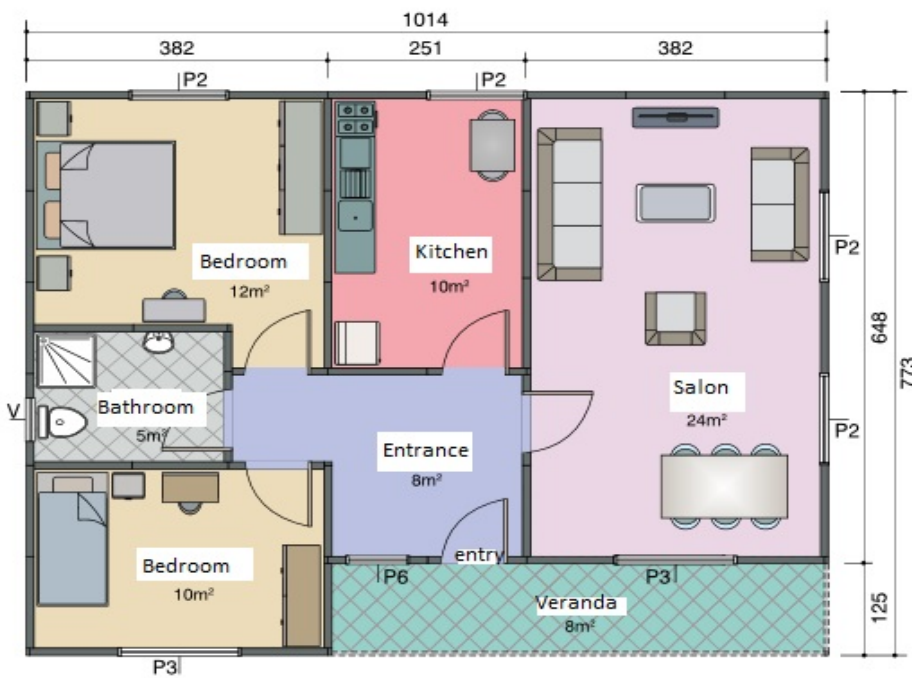


82m<sup>2</sup>











B69+8



77m<sup>2</sup>

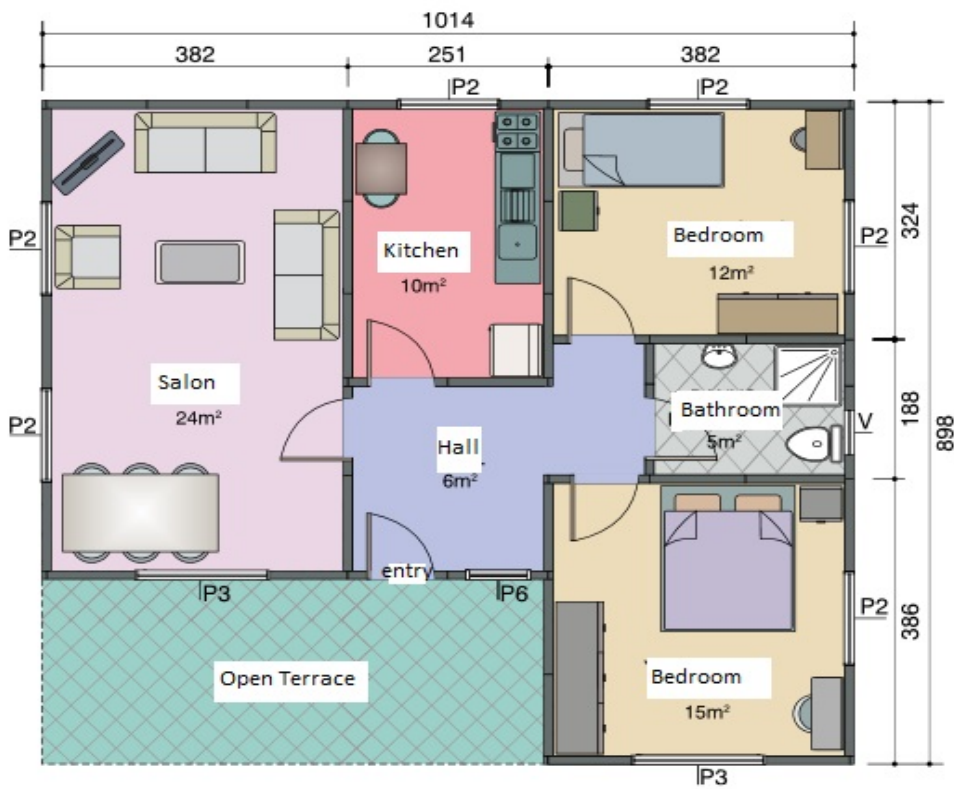




B75-1

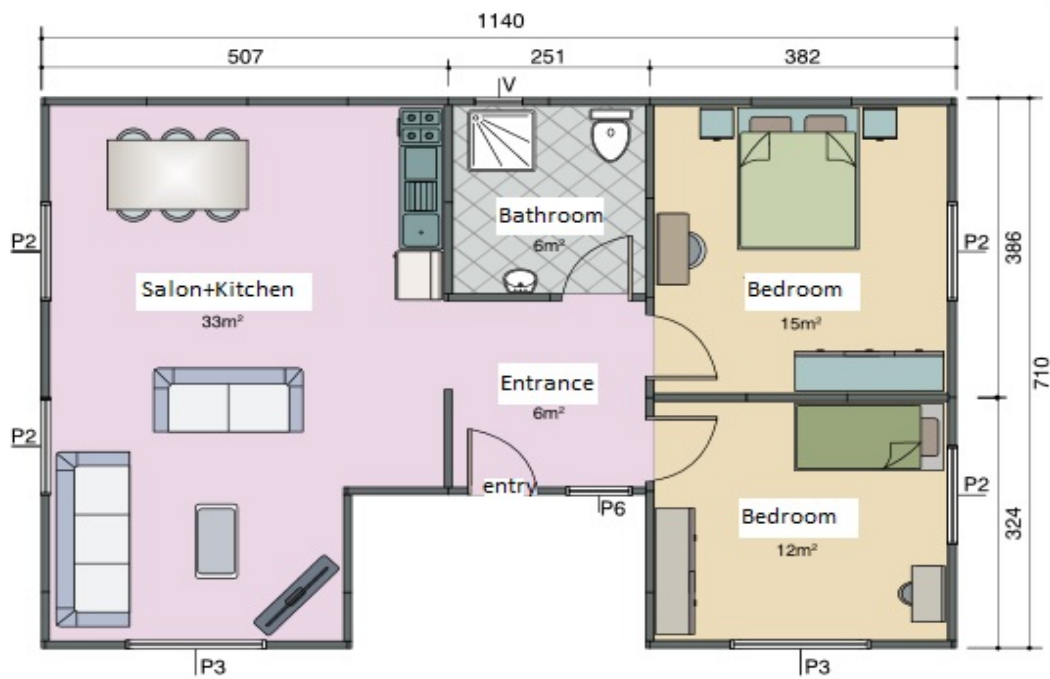


75m<sup>2</sup>

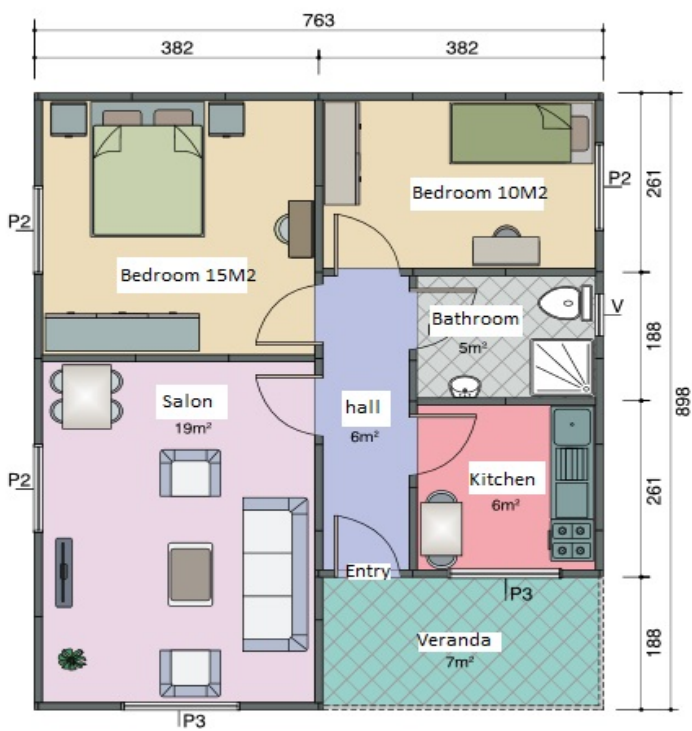


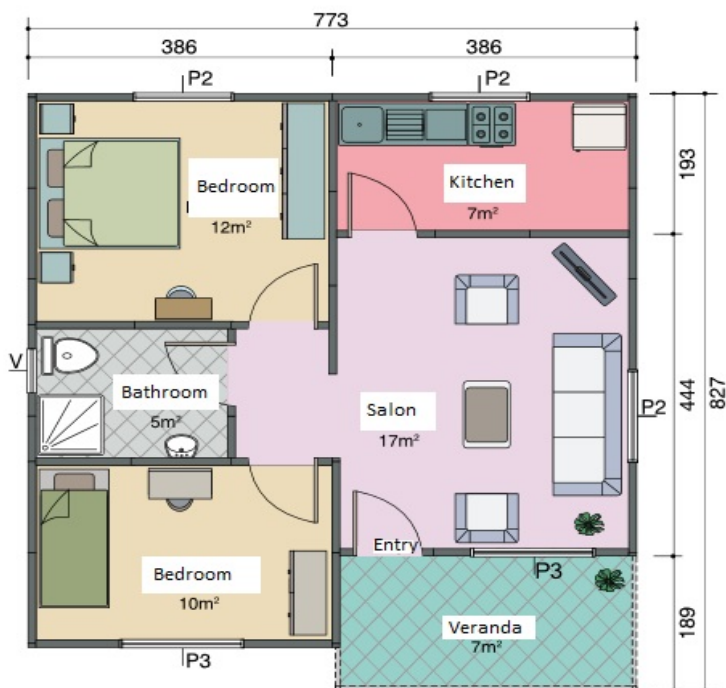




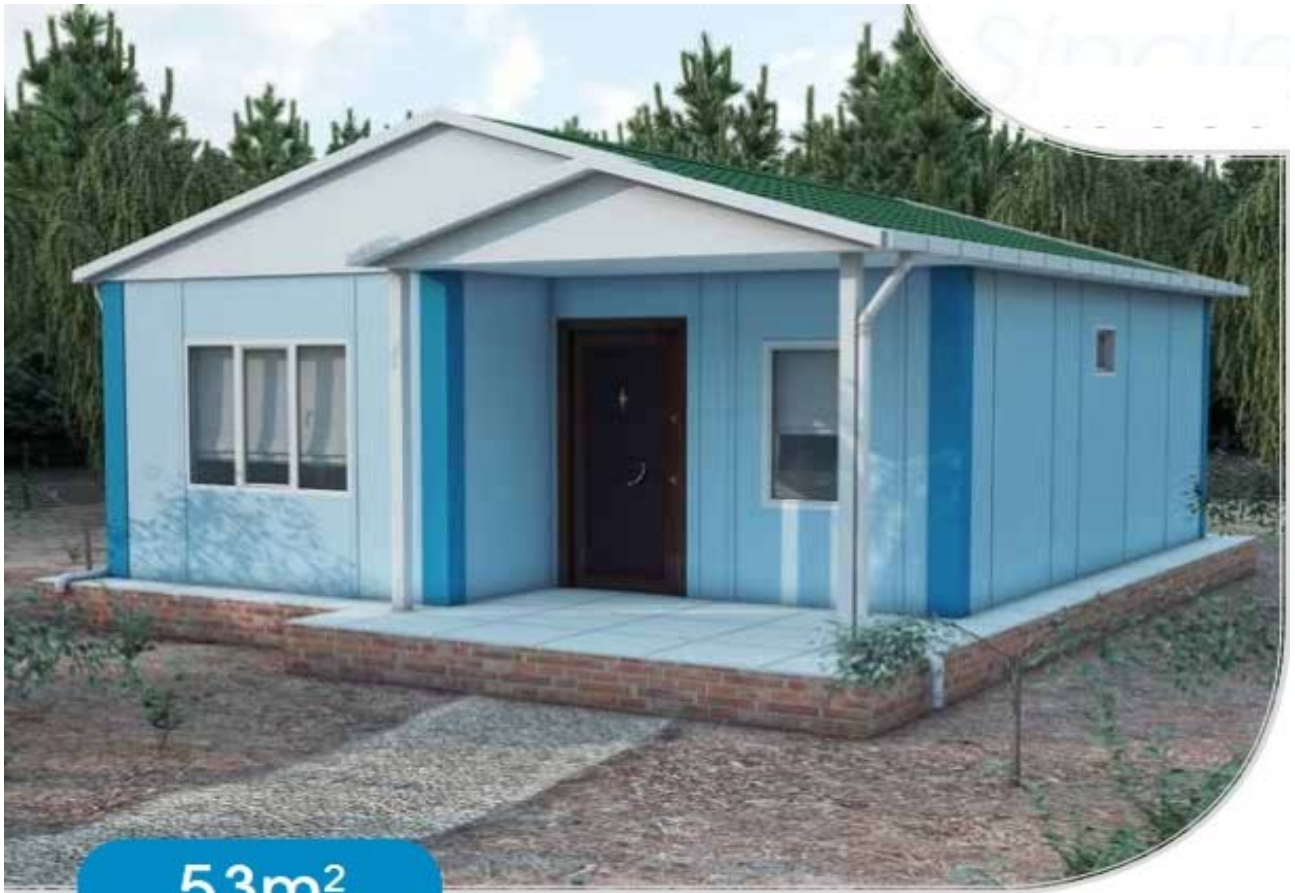




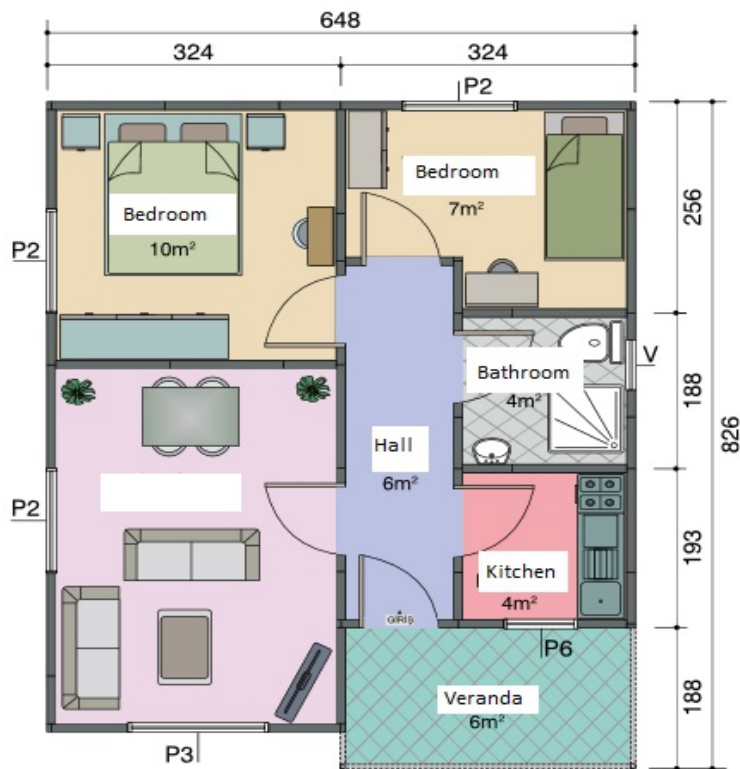








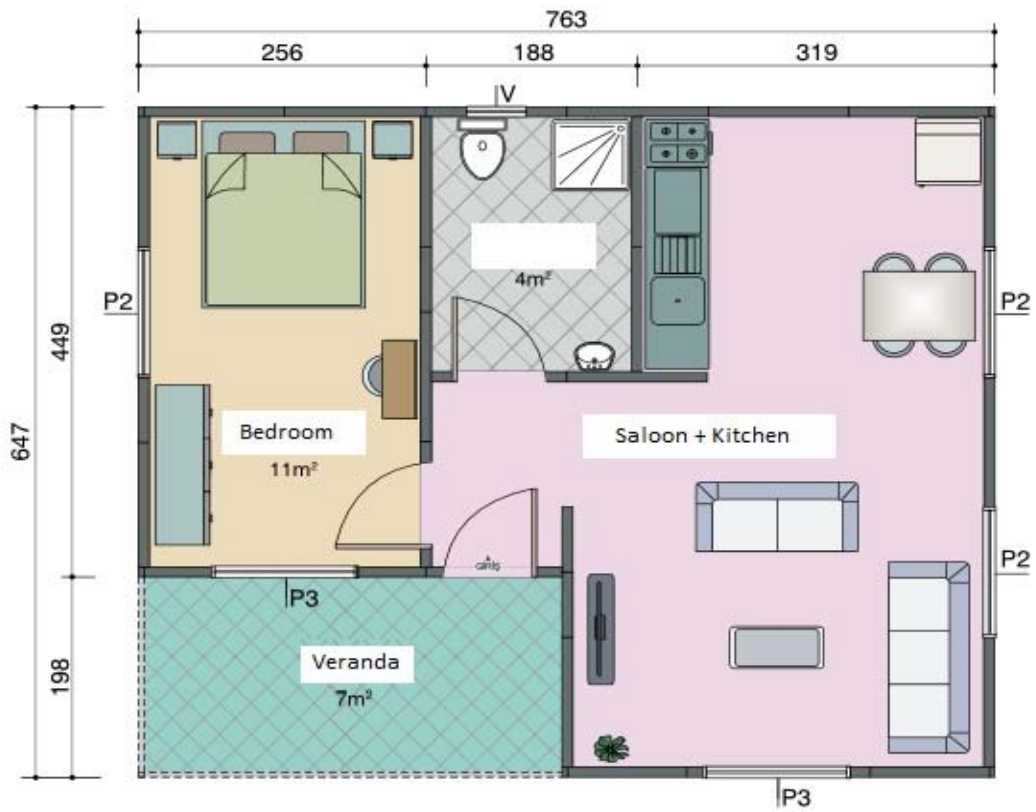
53m<sup>2</sup>

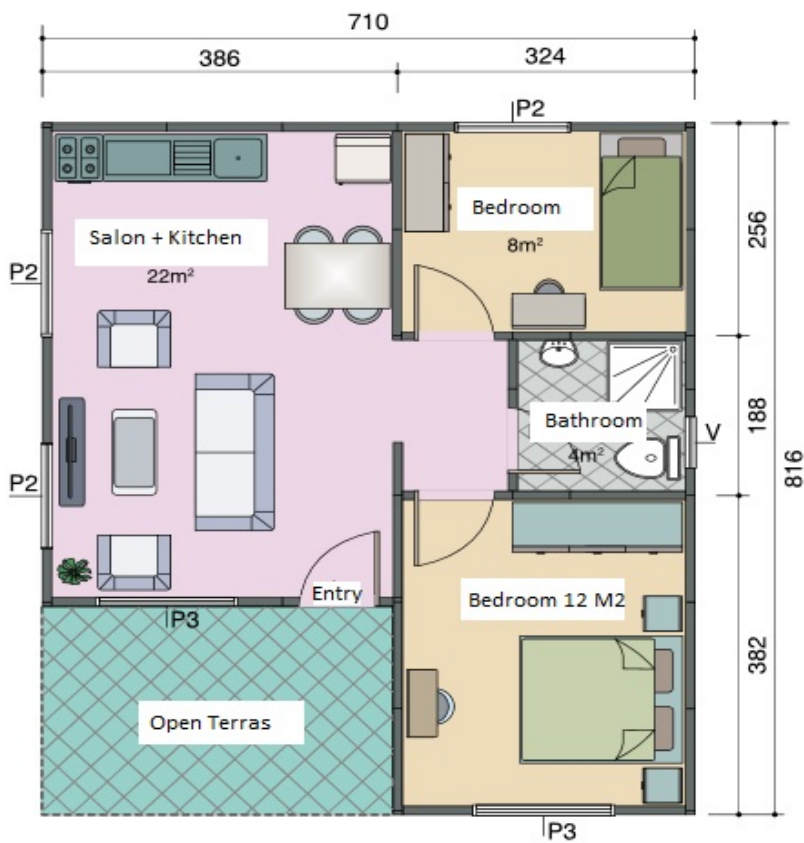


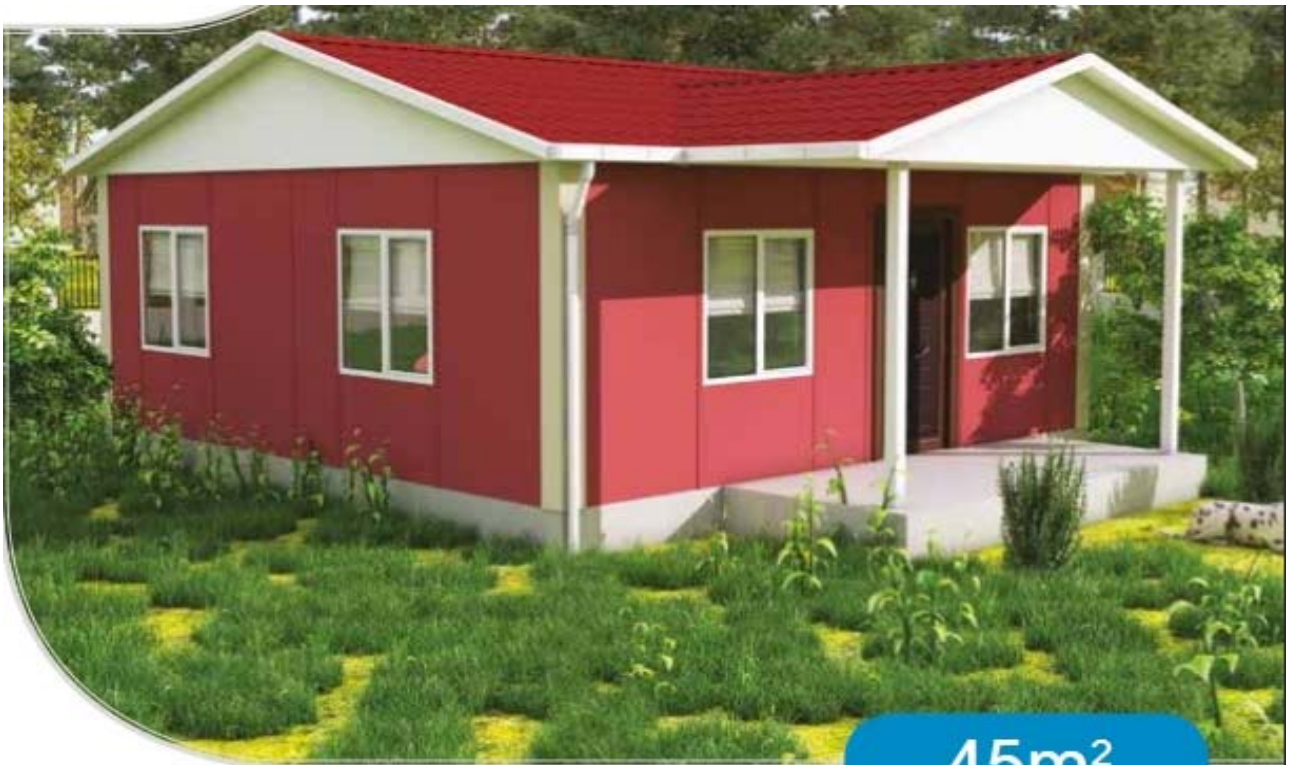




49m<sup>2</sup>







45m<sup>2</sup>





